

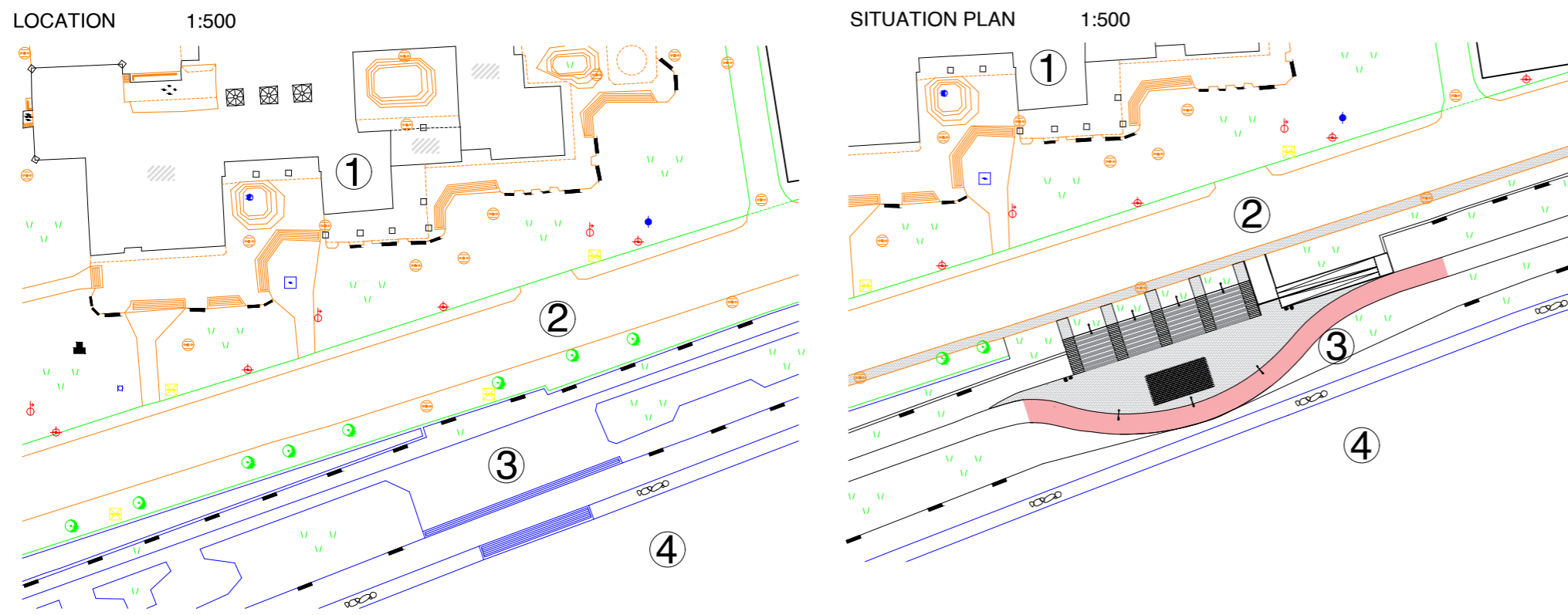
SKOPJE OF THE NEW GENERATION

СКОПЈЕ
НА НОВАТА
ГЕНЕРАЦИЈА

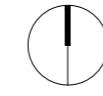


Location: Quay "Dimitar Vlahov" on the river Vardar

Identification Code: AB007



- 1 YOUTH CULTURAL CENTER
- 2 STREET "DIMITAR VLAHOV"
- 3 QUAY "DIMITAR VLAHOV"
- 4 PARKING
- 5 VARDAR RIVER



Location with site plan

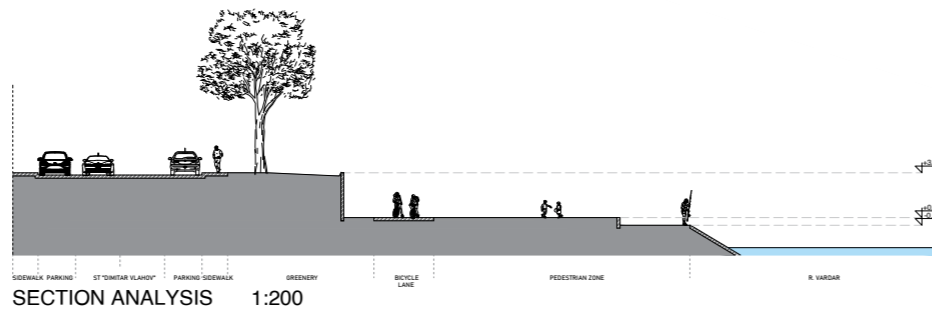


LOCATION ANALYSIS

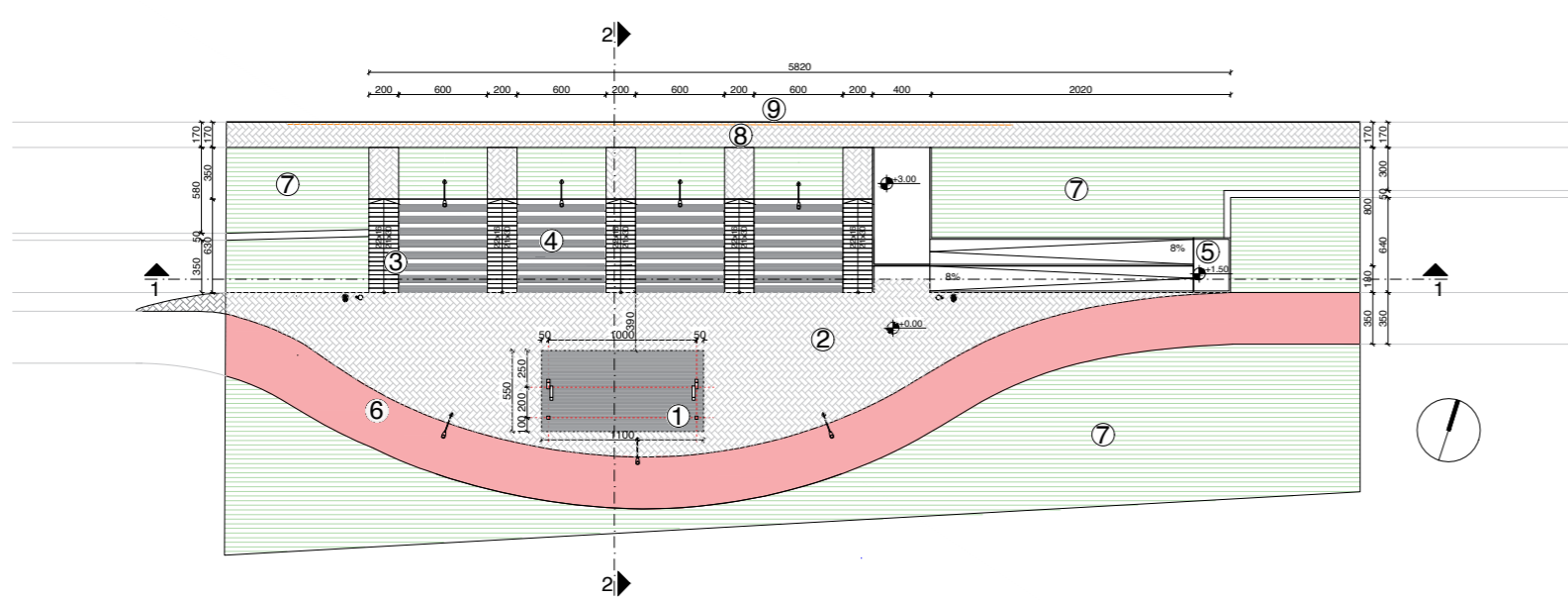
THE QUAY IS ISOLATED FROM THE YCC AND THE STREET NEXT TO IT, DUE POOR CONNECTIONS. THE ONLY CONNECTION IS 100M FROM THE YCC THAT IS A RAMP THAT CONNECTS THE UPPER LEVELS WITH THE BIKE LANE ON THE QUAY. THIS LEADS TO POOR VISITATION AND IT IS NOT USED TO ITS FULLEST POTENTIAL. GIVEN THE LOCATION THAT IS IN THE CENTER OF THE CITY AND NEXT TO SUCH SIGNIFICANT CULTURAL CENTER.

THERE HAVE BEEN MULTIPLE INSTALLATIONS FROM THE YCC TRYING TO MAKE USE OF THE AREA FOR DIFFERENT EVENTS, BUT AFTERWARDS THE FREQUENCY AND VISITATION ON THE QUAY IS AT A MINIMUM AND PARTS OF THE INSTALLATIONS STAND STILL AS NOTHING MORE THAN A REMINDER OF WHAT IT CAN BECOME.

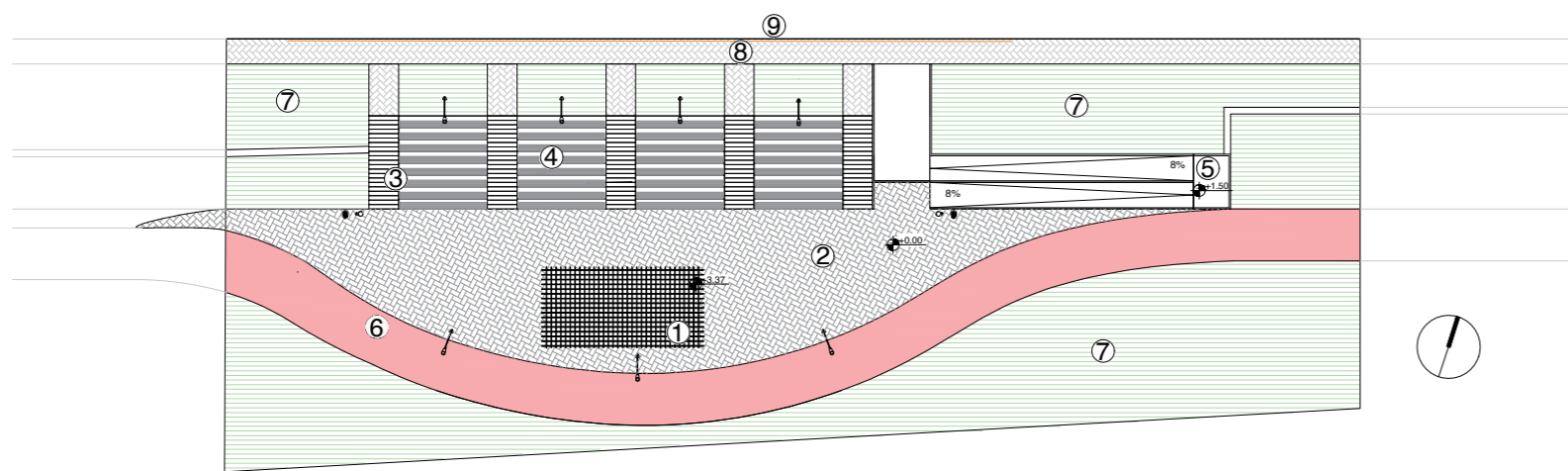
WHEN SUCH EVENT OCCURS AT THE YCC PEOPLE TEND TO SOCIALIZE OR TO REST ON THE EDGE AND OVERLOOK THE RIVER. AT CERTAIN TIMES THE FREQUENCY EXCEEDS ITS CAPACITY AND THE PEOPLE ARE EITHER LEFT STANDING ON THE GRASS FIELD, STREET OR THE SIDEWALK.



Analysis



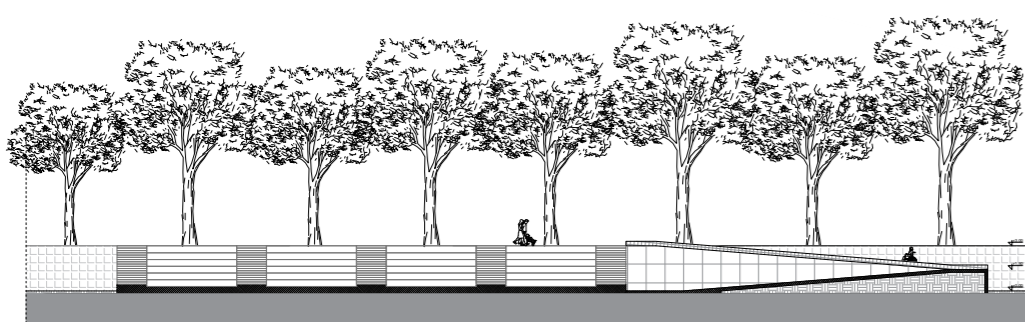
FLOOR PLAN 1:200



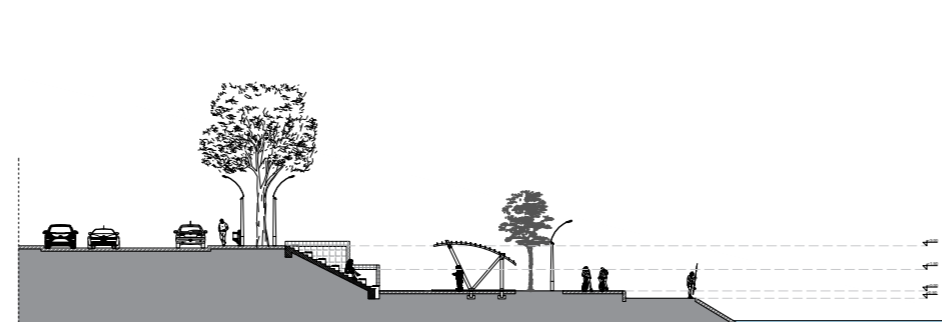
SITUATION PLAN 1:200

- 1 PAVILION
- 2 SQUARE
- 3 STAIRS
- 4 SEATS
- 5 RAMP
- 6 BICYCLE LANE
- 7 VEGETATION
- 8 SIDEWALK
- 9 STREET "DIMITAR VLAHOV"

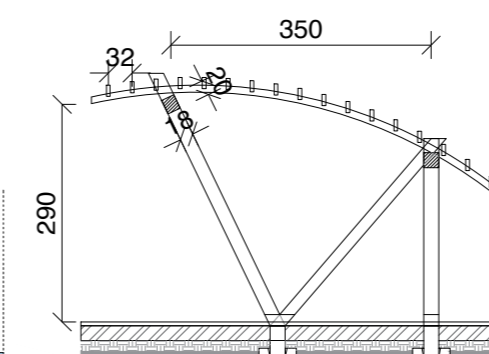
Floor plans



SECTION 1-1 1:200

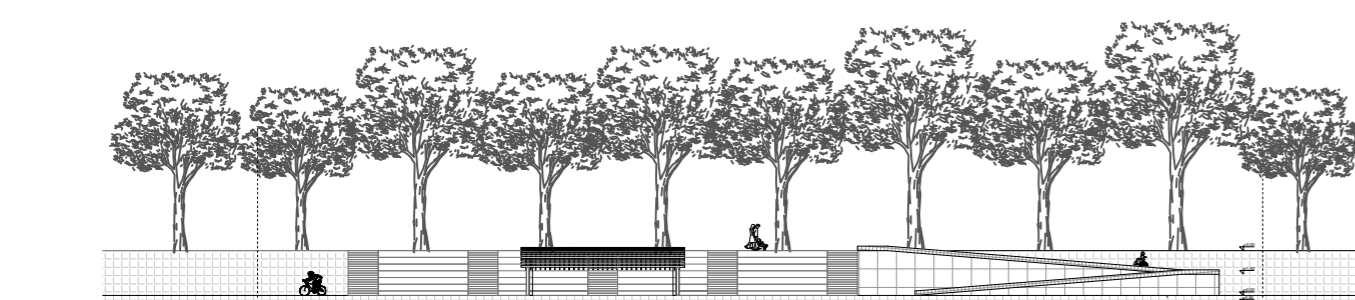


SECTION 2-2 1:200



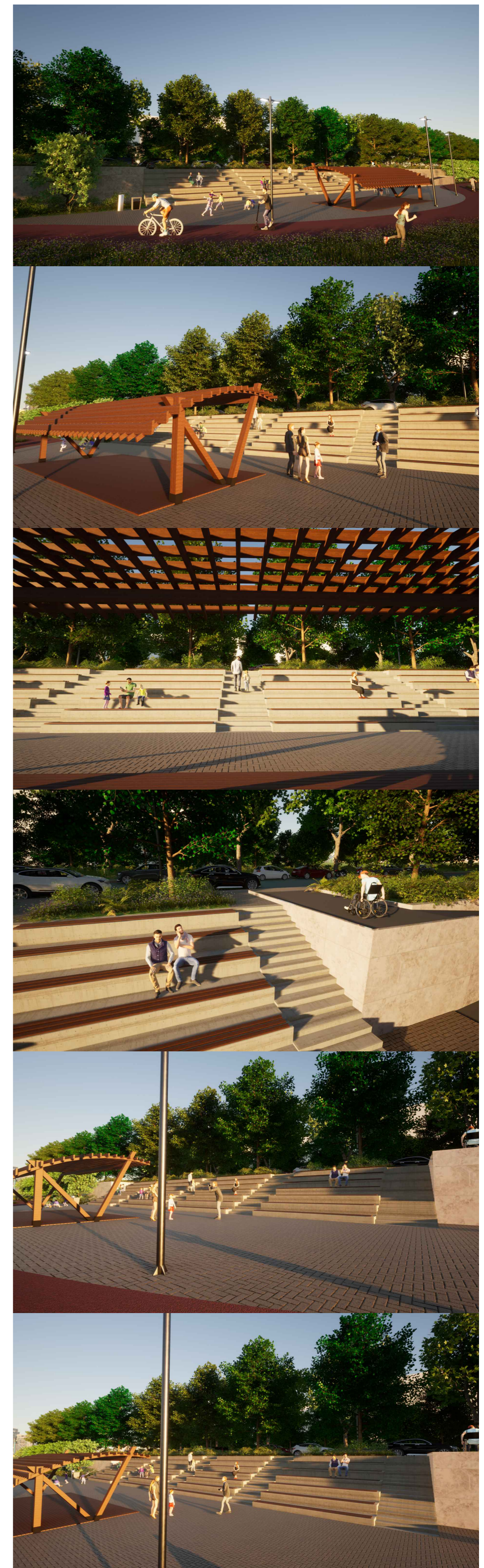
PAVILION SECTION 1:5

Sections



SOUTH ELEVATION 1:200

Elevations



3D views (optional)/sketches